

Silent power solutions

KEY FEATURES

- ▶ Up to 52 dBA noise reduction
- ▶ Minimal vibration
- ▶ All-watercooled “intercooling” concept
- ▶ Extremely compact
- ▶ Suitable for extreme ambient temperatures
- ▶ High quality electrical output, pure sine wave
- ▶ Plug and play installation, pre-fab connections
- ▶ Advanced digital power management (as standard)
- ▶ Remote access for service & operation
- ▶ CAN-bus connectivity for local and remote system access

Distribution by:



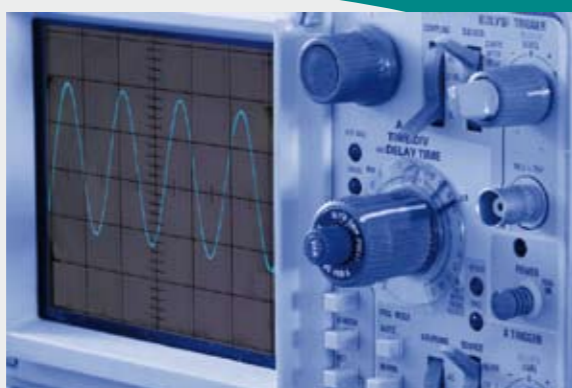
smart energy solutions

Kelvinlaan 82, 9207 JB Drachten, The Netherlands, Tel: +31 (0) 512 571 550, Fax: +31 (0) 512 571 599,
E-mail: info@whisperpower.nl, www.whisperpower.eu



SILENT POWER GENERATION

Electrical power without limitation, independent of the public grid. Without having the inconvenience of irritating noise and smell generator systems normally produce. WhisperPower is offering you the most silent and cleanest AC powersupply, efficiently operating with the vehicle's standard diesel fuel tank. Whether you are working on or next to the motorway, or just enjoying life on the road... We offer the best solution for you and your environment.

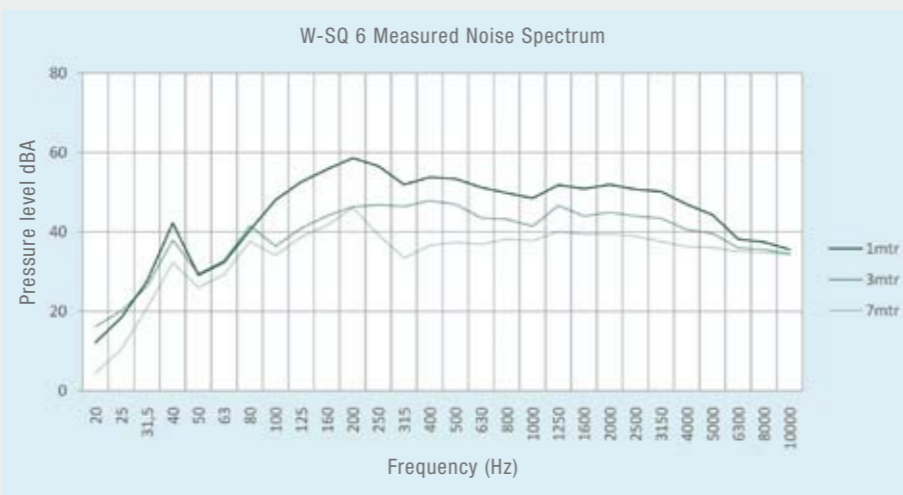


3 Stable voltage & frequency

The synchronous alternator in combination with an electronic governor, controlling fuel injection, ensure the supply of high quality electrical power. Broadcast equipment, computers, measurements equipment, or other sensitive equipment, no worries, smooth operation guaranteed. Due to the high surge capability (200%) inductive loads such as airconditioning will be started up smoothly.

2 Generator/inverter/parallel operation

The WhisperPower generator system is prepared to operate with combined DC/AC power systems, utilizing sine wave inverters delivering AC power during "Silent Periods". An automatic start stop system, integrated in the Electronic Whisper Control panel, will start the generator automatically in case of a low battery voltage.



1 Your security

- 5 year warranty*)
- Free commissioning & system set up*)
- Professional system design and pre-engineering
- Turn key system installation facility
- Trade-in of existing products possible
- Premium product quality and reliability
- 24/7 international service & support
- Lifetime parts support

*) Please consult us for our terms of sale.

4



Effective sound protection

Robust, metal sound shield fitted with sound protection layers on the inside. Access from one side for quick and easy service. Durable industrial latches used to secure the removable panels.

5 Fully enclosed parts inside

The front (engine) and back (AC alternator) are fully encapsulated - no dirt, soot, moisture or sand can enter the system. Sound guard is almost completely closed, with only a small aperture for combustion air intake.



High resolution full color touch screen (8.4 inch)

Historical information in numbers or as graphs

Digital and analogue indicators

User and service information, 6 languages

"System in operation" clearly indicated

Suitable for operating one or two generator systems.

Panel can be customized by showing name of vehicle builder and drawing of the vehicle

Easy-to-install with serial and Ethernet plug-in (includes internet access)

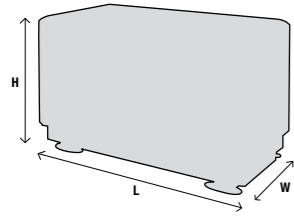
6 Intelligent digital remote panel

A variety of digital remote panels, offering a superior overview on all generator and electrical system related functions, is available as standard. They all include a set-up mode for automatic starting and stopping, high accuracy Volt/Hz/A/kVA read-out and a starter battery status indicator. Extended historical information, time-to-service and various alarms are standard features of both our DDC panels and the new (optional) 8.4 inch full color high resolution touch screen display. All our remote panels are suitable to operate with conventional or CAN-bus based communication protocols.

7 Built-in solutions

We provide practical mechanical solutions on to enable smooth access to the system and to ensure practical vibration proof usage. A proper base frame is key to obtaining optimum silent and vibration free systems.





W - SC 6

Art. no. 41102020

W - SC 10

Art. no. 41104020

W - SQ 6

Art. no. 41105020

W - SQ 8

Art. no. 41106020

W - SQ 12

Art. no. 41107020

W - SQ 16

Art. no. 41108020

W - SQ 25

Art. no. 41101020

| MAIN SPECIFICATIONS | | | | | | | |
|--|---|--------------------------|-------------------------|---|-------------------------|-------------------------|---|
| Nominal power ²⁾ | 5 kW | 9 kW | 5 kW | 8 kW | 12 kW | 16 kW | 25 kW |
| Nominal voltage ³⁾ | 230 V - 22 A | 230 V - 39 A | 230 V - 25 A | 230 V - 35 A | 230 V - 52 A | 230 V - 70 A | 230 V - 108 A |
| Output frequency | 50 Hz | 50 Hz | 50 Hz | 50 Hz | 50 Hz | 50 Hz | 50 Hz |
| Power factor / cos phi | 1 | 1 | 1 | 1 | 1 | 1 | 1 |
| Voltage tolerance ⁴⁾ | ± 5% | ± 5% | ± 5% | ± 5% | ± 5% | ± 5% | ± 2% |
| Frequency tolerance (Hz) ⁴⁾ | ± 1% | ± 1% | ± 1% | ± 1% | ± 1% | ± 3% | ± 3% |
| Voltage regulation | capacitor | capacitor | capacitor | capacitor | capacitor | capacitor | AVR |
| Starter battery | 12 V | 12 V | 12 V | 12 V | 12 V | 12 V | 12 V |
| Battery charge current | alternator 40 A | alternator 40 A | alternator 40 A | alternator 50 A | alternator 50 A | alternator 50 A | alternator 50 A |
| Dimensions with sound shield (l x w x h) | 690 x 525 x 580 mm | 805 x 525 x 580 mm | 805 x 525 x 580 mm | 900 x 575 x 640 mm | 1060 x 575 x 640 mm | 1160 x 680 x 700 mm | 1260 x 680 x 800 mm |
| Dry weight | 178 kg | 210 kg | 240 kg | 334 kg | 380 kg | 454 kg | 580 kg |
| Dry exhaust pipe | ∅ 1 inch BSP | ∅ 1,5 inch BSP | ∅ 1,5 inch BSP | ∅ 1,5 inch BSP | ∅ 1,5 inch BSP | ∅ 1,5 inch BSP | ∅ 2 inch BSP |
| Location oil refill cap | top & side | top & side | top & side | top & side | top & side | top | top |
| Max. operating angle | 25° in all directions | 25° in all directions | 25° in all directions | 25° in all directions | 25° in all directions | 25° in all directions | 25° in all directions |
| Alternator | ----- water-cooled, no brushes, synchronous ----- | | | ----- water-cooled, no brushes, synchronous ----- | | | ----- air-cooled, no brushes, synchronous ----- |
| Sound level ⁵⁾ | 56.2 dBA | 59.3 dBA | 51.9 dBA | 54.8 dBA | 55.7 dBA | 56.1 dBA | 58.3 dBA |
| SPECIFICATIONS DIESEL ENGINE | | | | | | | |
| Engine model | L2E | L3E | L3E | S3L2 | S4L2 | S4Q2 | S4S |
| Number of cylinders | 2 | 3 | 3 | 3 | 4 | 4 | 4 |
| Cylinder capacity | 635 cc | 952 cc | 952 cc | 1318 cc | 1758 cc | 2505 cc | 3331 cc |
| Bore & stroke | 2 x 76 x 70 mm | 3 x 76 x 70 mm | 3 x 76 x 70 mm | 3 x 78 x 92 mm | 4 x 78 x 92 mm | 4 x 88 x 103 mm | 4 x 94 x 120 mm |
| Air consumption | 0.95 m ³ /min | 1.43 m ³ /min | 0.8 m ³ /min | 1.1 m ³ /min | 1.5 m ³ /min | 2.1 m ³ /min | 2.8 m ³ /min |
| Engine cooling | water-cooled | water-cooled | water-cooled | water-cooled | water-cooled | water-cooled | water-cooled |
| Fuel consumption (no load - full load) | 1-2.5 l/hour | 1-4 l/hour | 1-3 l/hour | 1-3 l/hour | 1-4 l/hour | 1-5 l/hour | 1-8 l/hour |
| ACCESSORIES & OPTIONS | | | | | | | |
| 3 phase 3 x 400 VAC output | n.a. | n.a. | n.a. | available | available | available | available |
| Power take off for hydraulics | n.a. | n.a. | n.a. | available | available | available | available |
| Radiator cooling kit engine / art. no. | 40201879 | 40201864 | 40201879 | 40201864 | 40201877 | 40201877 | 40201897 |
| Radiator cooling kit alternator / art. no. | 40201878 | 40201878 | 40201878 | 40201878 | 40201878 | 40201888 | single radiator |
| Fan control kit / art. no. | 40201882 | 40201882 | 40201882 | 40201882 | 40201882 | 40201882 | single radiator |
| Extra large expansion tank 7 ltrs / art. no. | 40230535 | 40230535 | 40230535 | 40230535 | 40230535 | 40230535 | |
| Dry exhaust kit / art. no. | 40201320 | 40201875 | 40201875 | 40201875 | 40201875 | 40201875 | 40201889 |
| Fuel kit / art. no. | 40230210 | 40230205 | 40230205 | 40230205 | 402030205 | 40230205 | 40230205 |
| Full color 8.4 inch touch screen panel | optional | optional | optional | optional | optional | optional | optional |

²⁾ peak power 200%

³⁾ 120 V/50 or 60 Hz available as well

⁴⁾ controlled by electronic governor

⁵⁾ at 7 mtrs



Digital Diesel Control:
remote control panel
supplied with 15 m cable
dimensions h x w = 60 x 120 mm



Digital Diesel Control: (introduced mid 2009)
remote control panel
touch screen, Masterbus compatible
dimensions h x w = 113 x 113 mm

YOUR ONE STOP SHOP

We are dedicated to a philosophy of installations without weak links. Therefore we have developed a complete range of high quality installation components, ensuring the system to function perfectly, even under extreme circumstances, year after year. Radiator cooling systems, exhaust mufflers, fuel supply and filtering devices, starter kits, we offer it all from one catalogue. In addition, we are able to tailor make parts to your specifications and even do the entire installation, in your or our own location.



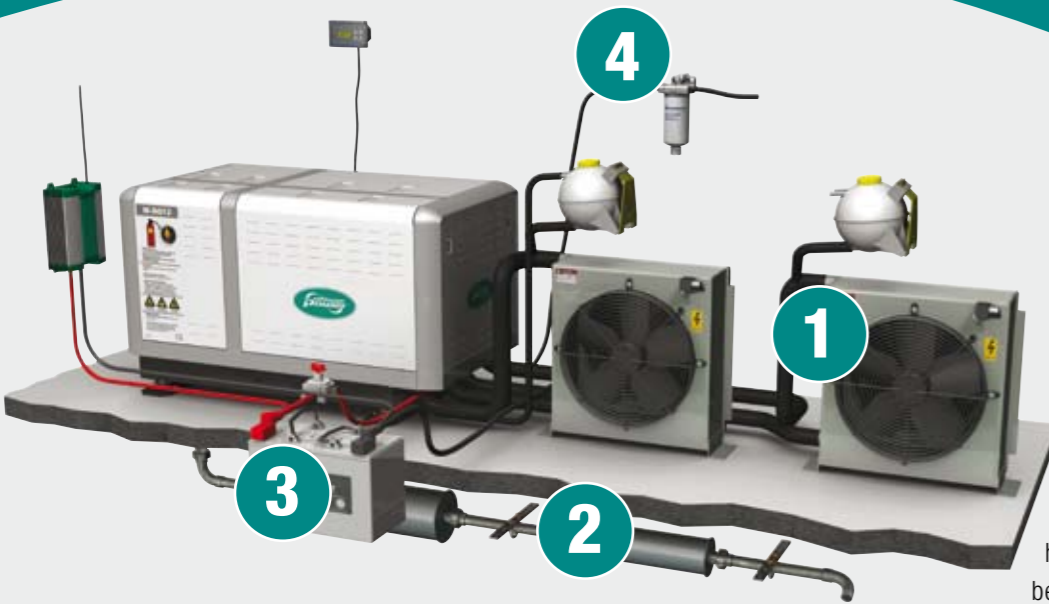
THE COMPANY

The first Whisper generator systems were installed in 1998. Since then, more than 7.000

mobile and marine generators have been shipped on a world wide base. Whisper Power BV is located in Drachten, in the north of the Netherlands. Dedicated in-house product development, production and quality control, following ISO standards, guarantee the best quality and the latest technology.

In our systems we utilize industrial diesel engines which comply with the latest emission standards including EPA, from reputable companies such as Kubota and Mitsubishi.

Our extended, international network of technically experienced distributors and installers ("we are not moving boxes") take care of supply, technical support and service.



1. Cooling system for diesel engine and alternator

Two radiators are required to cool the system adequately, under all thinkable circumstances. One radiator is needed to cool the engine, the second to cool the AC alternator. Our standard radiators operate on 230 or 120 VAC, speed control of the fans is controlled by our electronic fan controls. The radiators can be installed almost anywhere: below the floor, on the roof or in a separate (well ventilated) compartment. This kit includes sufficient pipework and connectors. Expansion tanks as shown in picture above, are necessary to keep the water flow at level.

2. Exhaust system

This is one of the most critical parts of the installation. We have selected the finest mufflers: two of them, fitted in line, are needed to bring the noise level outside the vehicle to a "whispering" level. Pipes, joints, bends and insulation material we supply, making this part of the job easy.

3. Starting the system

WhisperPower generators are fitted with a 12 V DC alternator to charge the starter battery as standard. In case you do not want to take care of the battery yourselves, we can provide you with a maintenance free, sealed, high class starter battery and a DC switch. Also we can supply a 12V 3-stage battery charger in case you want to connect the battery to the public grid.

4. Fuel supply system

The generator system operates on the vehicle's fuel tank. We recommend the installation of a fuel/water separator filter to make sure the fuel system remains clean and the generator keeps on running. A complete kit with hose clamps, couplings, and hoses can be obtained from us.

5. Spare part kits

An extensive range of spare parts is available through our distributor network. In case you want to have some emergency parts at hand, our Spare Part kits will be helpful. Our A-kits include filters and V belts, our B-kits are more extensive, including seals and various mechanical parts.

